

Prices do not include shipping charges or sales tax. Direct any inquiries to purchase or requests for additional information to Brian Ingwell, brian@goaudiolive.com or 414-858-9210.

MARTIN AUDIO F215 LOUDSPEAKERS (1 PAIR)

\$1,500/PAIR

Dual 15" w/ 1.4" exit horn passive loudspeaker. Come with rear casters and black padded covers. Switch has been added to facilitate full range or bi-amp operation.



MARTIN AUDIO EM56 LOUDSPEAKERS (QTY. 4)

\$500/PAIR

10" + 1" 2-way passive loudspeaker. Perfect as front fill or main for small room. Sold in pairs. Each pair comes with dual ATA road case and 2 flying yokes.



MARTIN AUDIO WS2A SUBWOOFER

\$500

Dual 15" passive subwoofer. One only. Great compact drum sub. Comes with rear casters and black padded cover.



TCS AUDIO TM206 LOUDSPEAKERS (1 PAIR)

\$450/PAIR

Dual 6" + 1" low profile passive box. Rotatable 90 x 60 degree horn. B&C drivers. Similar in size and driver configuration to an EAW JF80. Comes with dual ATA road case.



SHURE UA844 ANTENNA SPLITTER (QTY. 2)

\$200 EA.

4-way wideband antenna splitter. 470 - 960 MHz. Includes power supply, 10 short BNC cables, 2 panel mount BNC passthru's, 4 screw-on DC power cables.



MOTION LABS RAC PAC POWER DISTRO

\$400

L21-30 in/thru. (2) L5-30 outputs, (4) Edison duplex outputs. Additional Edison duplex Aux output on front panel. 2 RU.



ENTERTAINMENT METALS RAC PAC POWER DISTRO

\$400

L14-30 in/thru. (6) Edison duplex outputs. Additional Edison duplex Aux output on front panel. 2 RU.



12 CH. W1 MULTIPIN CABLE - 100 FT.

\$225

W1IM (male) to W1IM (male) 12 channel multipin cable. 100 feet. Cable is Link Eurocable 110 ohm variety, making it compatible with analog or digital signals.



12 CH. W1 MULTIPIN JUMPER - 10 FT. (QTY. 2)

\$125 EA.

W1IM (male) to W1IM (male) 12 channel multipin cable. 10 feet. Cable is Link Eurocable 110 ohm variety, making it compatible with analog or digital signals.



LOT OF MULTICABLE

\$250

Includes the following: 45' 12/19 (male 19 pin to blunt); 77' 12/19 (male 19 pin to blunt); 78' 12/19 (blunt to blunt); 22' 14/14 (blunt to female 19 pin); 46' 14/14 (blunt to blunt); 52' 14/14 (male 19 pin to blunt); 69' 14/14 (blunt to blunt); 93' 16/18 (male 19 pin to blunt)



JBL SUBWOOFER POLES JBLPOLE-MA (1 PAIR)

\$100/PAIR

Adjustable height subwoofer poles. M20 threaded base.



MIDDLE ATLANTIC UCP FK4 KITS (2 SETS)

\$95/SET

Set includes FK4 4 rack space frame and 10 panels made up of (3) UNIV2, (2) UNIV4, (1) DUP2, (1) TW3B and (3) UCPB1



VARIOUS ENT. METALS PUNCHED PANELS

\$10 EA.

A wide variety of custom panels removed from old racks. Combinations of XLR, Speakon, Ethercon, duplex, twist lock, etc. May not be exactly what you need, but a cheap way to get your inputs and outputs mounted. Picture is a small sample of what we have. Let us know what you need.



CBI 19 PIN SPLITTERS (QTY. 2)

\$200 EA.

19 pin male to dual 19 pin female. 12 AWG. Like new condition.



LM CASE UTILITY TRUNKS (QTY. 2)

\$45 EA.

LM Case foam lined utility trunks. O.D. 27.5" W x 20.5" D x 24" H. Showing signs of use, but all latches and casters are in good working condition.



DBX ZC-1 REMOTE VOLUME CONTROL

\$40

Remote wall mount volume control for use with dbx Zone Pro processors. New - never used.



HUBBELL HBL2810 L21-30 RECEPTACLES (QTY. 6)

\$30 EA.

Brand new, in box.



SQUARE D QO BREAKERS

\$4/\$10 EA.

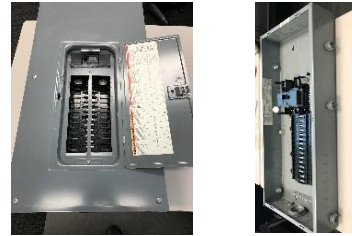
Standard QO breakers, single and double pole. The following sizes are available: Double pole - 40A, 30A, 20A; Single pole - 20A. \$4 for single pole, \$10 for double pole.



SQUARE D QO130M150PC PANEL BOARD

\$75

150A main breaker. 30 slots. Comes with cover.



SQUARE D QO2100NRB BREAKER BOX

\$35

100A double pole breaker and enclosure.

